

Peak District National Park Track Record

Peak Architects has an enviable track record in achieving successful planning permissions in the Peak District National Park; working across a variety of sectors and on Listed buildings. The key to our approach is to engage early with the Planning Authority and, where buildings are listed, with Historic England (English Heritage).

This approach has allowed us to maintain a high planning success rate whilst providing innovative design solutions which utilise locally derived materials, reinforce and enhance the character of the Peak Park, whilst being bespoke to each client.

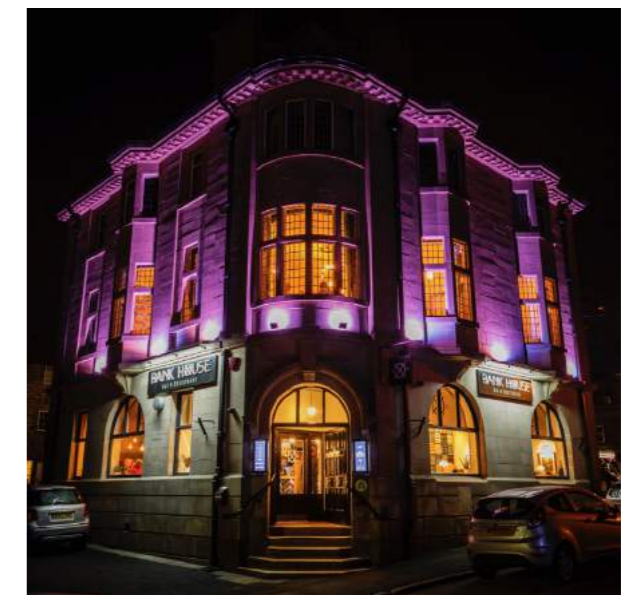
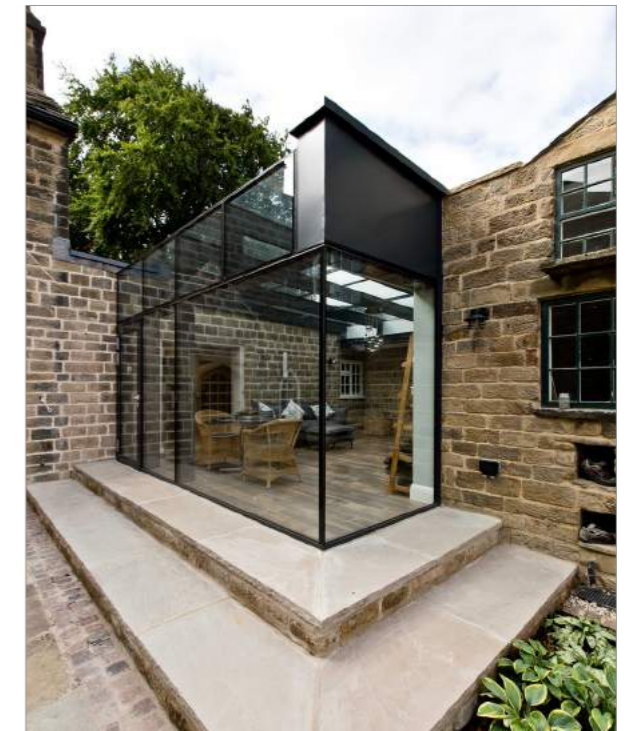
We have an extensive network of consultants and contractors who work locally and nationally and can, as necessary, assist in providing a comprehensive design service for both residential and commercial developments in the national park.

In 2018, we were successful in the Peak Park Planning Awards, receiving a Commendation in the 'Non Residential' Category for our Chatsworth Birdhide project and winning the 'Non Residential' Category for our Chatsworth Stickyard.

Successful planning approvals and completed projects within the Peak District National Park can be viewed below:

2020

The Old Bell House	Grade II Listed Residential	Planning Approved
Brandery Stones, Wadshelf	Residential/ Interior Modelling	Planning Submitted
Cheese Shop, Hartington	Grade II Listed Commercial	Planning Submitted
Ladywash Farm, Eyam	Grade II Listed Residential	Planning Application
Chatsworth Farm Shop Power Supply	Grade I* Listed Commercial	Planning Approved
Red House Farm, Bakewell	Residential	Planning Application
Westering, Curbar	Residential	Planning Application
White House Farm, Hathersage	Residential	Planning Application
Manor House Farm, Monyash	Residential	Planning Application
The Filter House, Sheffield	Residential	Planning Application
Gores Farmhouse, Bamford	Residential	Planning Application
End Cottage, Knouchley Farm	Residential	Planning Application
Odd House, Hathersage	Residential	Planning Application



Peak District National Park Track Record

2019

Hillcrest, Barlow	Residential/ Interior Modelling	Planning Approved
Southview Farm, Bamford	Residential/ Interior Modelling	Planning Approved
Meadow Cottage, Snitterton	Residential/ Interior Modelling	Planning Approved
Knouchley Cottage, Calver	Residential/ Interior Modelling	Planning Approved
Woodlands, Eaton Hill	Residential/ Interior Modelling	Planning Approved
Treganna, Baslow	Residential / Interior Modelling	Planning Approved
Smithy Meadows, Hathersage	Residential / Interior Modelling	Planning Approved
Aughton House, Eyam	New Artists' Studio	Planning Submitted
The Bungalow, Kettleshulme	Residential/ Interior Modelling	Planning Submitted

2018

Hazleford Hall, Hathersage	Private Residential	Planning Approved
Hilltop House, Hathersage	Residential/ Interior Modelling	Planning Approved
Ash House Farm, Abney	Residential/ Interior Modelling	Planning Approved
Orchard Leigh, Baslow	Residential / Interior Modelling	Planning Approved
Springfield Cottage, Castleton	Residential / Interior Modelling	Planning Approved
Mooredge, Bamford	Residential / Interior Modelling	Planning Approved
Old Stables, Youlgreave	Residential / Interior Modelling	Planning Approved
Derwent Lane, Hathersage	Residential / Interior Modelling	Planning Approved
Bamford Hall, Bamford	Residential / Interior Modelling	Planning Approved
Eastgate, Baslow	New Build Residential	Planning Approved
Chestnut Centre, Chapel-en-le Frith	New Build Residential	Planning Approved

2017

The Bank House, Hathersage	Commercial - Restaurant/ Bar	Completed
The Rising Sun, Bamford	Commercial - Hotel	Planning Approved
Thickwood Lodge, Longshaw	Grade II - Residential/ Interior	Planning Submitted
Slack Farm, Chapel-en-le-Frith	Grade II - Residential/ Interior	Planning Approved
Ridge House, Baslow	Residential / Interior Modelling	Planning Approved
Coppice Close, Froggatt	Residential / Interior Modelling	Planning Approved
Brambleside, Froggatt	Residential / Interior Modelling	Planning Approved



Peak District National Park Track Record

2016

Chatsworth Stables	Grade I* - Retail Conversion	Complete
Chatsworth House	Gardener's Mess Facilities	Completed
Bakewell	Commercial Offices/Apartment Conversion	Planning Approved
Moorside Farm, Onecote	Residential/ Interior Modelling	Planning Approved
Chaddlewood, Bamford	Residential/ Interior Modelling	Completed
Ladybower Inn, Bamford	New Letting Bedrooms	Planning Approved
Eaton Cottage, Baslow	Residential/ Interior Modelling	Completed
Carrcroft, Thornhill	Residential/ Interior Modelling	Completed
Linden House, Grindleford	Residential/ Interior Modelling	Completed
Stafford Close, Castleton	Residential/ Interior Modelling	Completed
Rooftops, Hathersage	Residential/ Interior Modelling	Completed
Spital Building, Castleton	Grade II Barn Conversion	Planning Approved
The Old Vicarage, Barlow	Residential/ Interior Modelling	Completed
Delf View House, Eyam	Grade II House Remodelling	Completed

2015

Chatsworth Stables	Grade I* - Retail Conversions	Completed
Dukes Barn, Beeley	Outdoor Pursuit Centre	Completed
The Nursery, Stoney Middleton	Residential/ Interior Modelling	Completed
Hillcrest, Barlow	Garden Room	Completed
Chatsworth House	Hydro Stations	Planning Approved
Lathkill Cottage, Over Haddon	Residential/ Interior Modelling	Completed
Cragwood Cottage, Foolow	Residential/ Interior Modelling	Completed
The Old Vicarage, Hope	Residential/ Interior Modelling	Completed
Moor Lodge, Sugworth	Residential/ Interior Modelling	Completed
Chatsworth Farmyard	Birdhide	Completed
Underedge, Hathersage	Passiv Haus Conversion	Completed



Peak District National Park Track Record

2014

Halfacre, Hope	Residential / Interior Modelling	Completed
Ramblers Rest, Castleton	Change of Use Application	Completed
Eccles Close, Hope	Residential / Interior Modelling	Completed
Homestead, Foolow	Garage/ Dependant Relative Accommodation	Completed
Marson House, Bamford	Garden Room	Completed
Undercliffe, Calver	Loft Conversion/ Garden Extension	Completed
Fairthorne, Curbar	New Kitchen/ Family Room Extension	Completed
Millstone, Hathersage	Garden Room Extension	Completed
The Cowshed, Grindleford	Holiday Accommodation	Completed
Brookfield, Calver	Two Storey Extension	Completed
Eccles Close, Hope	Passiv Haus Conversion	Completed
Devonshire Arms, Beeley	Grade II Listed Commercial Accommodation	Completed
Fidlers Close, Bamford	Landscape Works	Completed

2013

Ashopton, Bamford	Residential/ Interior Modelling	Completed
High Leigh, Hathersage	Garden Room	Complete
Post Office, Bamford	Change of Use Application	Completed
Millbridge, Castleton	Residential Extension	Completed
Jasmine Cottage, Curbar	New Kitchen/ Family Room Extension	Planning Approved
Meadowside, Bamford	Two Storey Extension	Completed
Chatsworth Stickyard	Outdoor Education Centre	Completed

